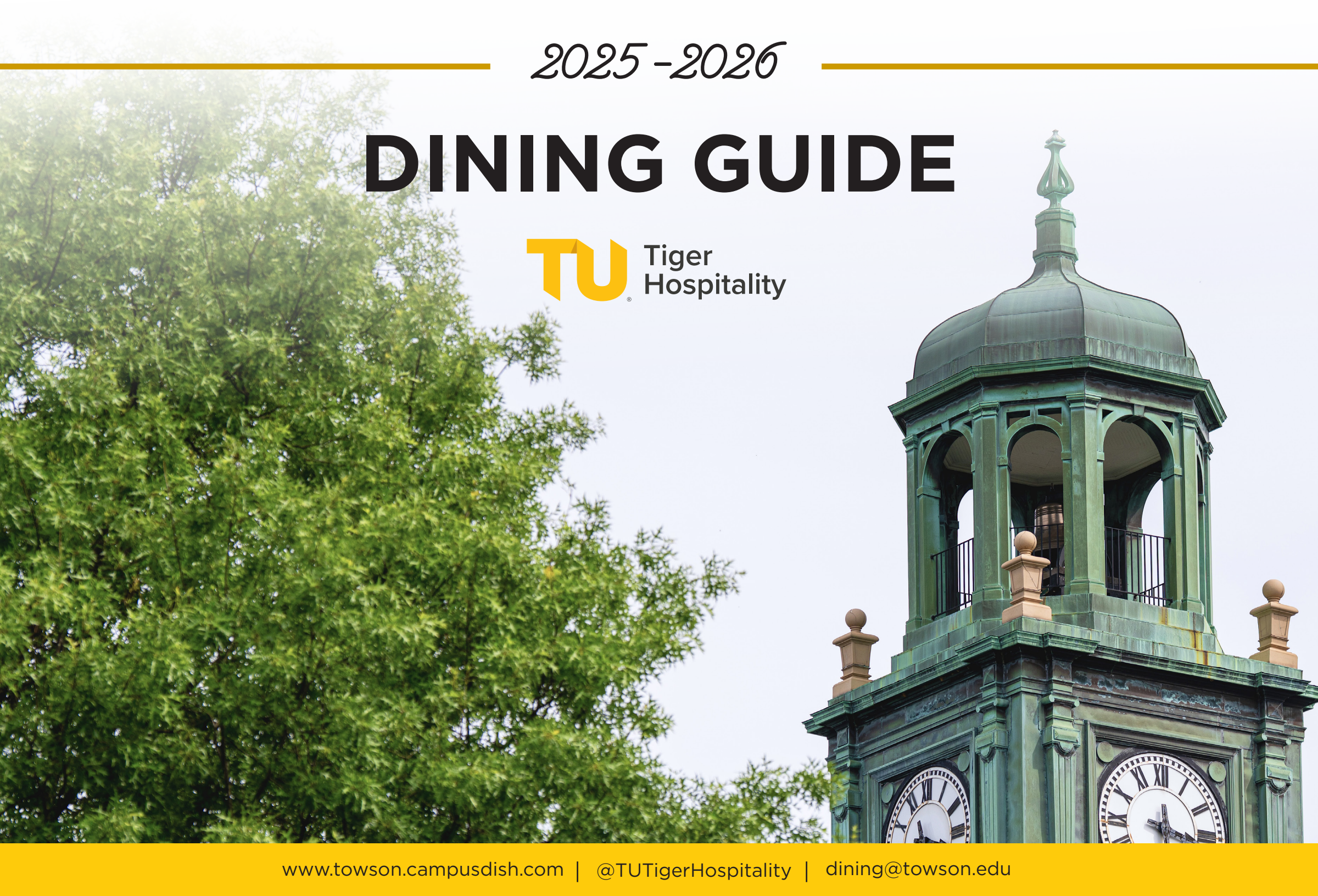


2025-2026

DINING GUIDE



Campus Meal Plan Options

Students living in required housing will automatically be assigned the Gold All Access Plan but have until the drop/add date to change their meal plan selection. Mandatory Housing are all Students in: Barton House, Douglass House, Glen Complex, Newell Hall, Richmond Hall, Prettyman Hall, Scarborough Hall, Residence Tower, & The Residences at 10 West Burke Avenue Floors 2-5.

CAMPUS ALL ACCESS PLANS

PLATINUM \$3,705 PER SEMESTER

**BEST
VALUE**
All Access

All Access Meals

Unlimited access to all three dining halls

10 Tiger Meals per week

500 Dining Dollars

3 Guest Swipes

GOLD \$3,455 PER SEMESTER

**MOST
POPULAR**

All Access Meals

Unlimited access to all three dining halls

7 Tiger Meals per week

300 Dining Dollars

3 Guest Swipes

SILVER \$3,145 PER SEMESTER

All Access Meals

Unlimited access to all three dining halls

5 Tiger Meals per week

100 Dining Dollars

3 Guest Swipes

BRONZE \$2,875 PER SEMESTER

All Access Meals

Unlimited access to all three dining halls

2 Tiger Meals per week

50 Dining Dollars

3 Guest Swipes

Living off campus or in non-required housing? We have meal plans for you too!

You're eligible for any All Access or Block Plans. Block Plans are flexible throughout the semester, roll over from fall to spring, and expire at the end of the academic year. You can add Dining Dollars or reload your Block Plan at anytime.

OFF CAMPUS BLOCK PLANS

BLOCK 100 \$1,275

**BEST
VALUE**
Block

100 Meal Swipes or Tiger Meals
200 Dining Dollars
3 Guest Swipes

BLOCK 50 \$750

50 Meal Swipes or Tiger Meals
150 Dining Dollars
3 Guest Swipes

BLOCK 25 \$400

25 Meal Swipes or Tiger Meals
100 Dining Dollars
3 Guest Swipes

To learn more about meal plans and key dates check out our dining website at www.towson.campusdish.com

To select or edit your meal plan visit the TU ONEcard portal at www.onecard.towson.edu

Parts Of Your Meal Plan

MEAL SWIPES



Meal Swipes = Access to Dining Halls

Meal Swipes are used to get into any of our all-you-care-to eat residential dining halls: Glen Fresh Food Co., Newell Dining Hall, and West Village Dining Hall. Students swipe in at the entrance of the dining hall using their OneCard.

DINING DOLLARS



Dining Dollars are accepted at all food courts, coffee shops and markets throughout campus. Dining Dollars are tax exempt (6% savings on all purchases!), rollover until graduation, and can be added on at any time.

TIGER MEALS



Tiger Meals, a cost savings perk of your meal plan, can be used to purchase meals beyond the dining halls to allow students to exchange a meal swipe for certain combo meals at on campus restaurants. For example, using a Tiger Meal for a sandwich, fries & beverage from Chick-fil-A instead of dining dollars.

GUEST MEALS



Guest meals can be used to treat friends or family to a meal in the dining halls.



WEST VILLAGE DINING HALL & WEST VILLAGE COMMONS



TIGER 24/7 Autonomous Market
EXPRESS

UNIVERSITY UNION FOOD MARKET



**CAMPUS
DINING MAP**

AT TOWSON UNIVERSITY

ARTISIAN CAFE

In the Center for the Arts

CONCESSIONS

**DOC'S SOUTH
CAMPUS KITCHEN**

Serves an athlete-focused menu
in Towson Center

LA CAFE

In the College of Liberal Arts

AU BON PAIN

In Hawkins Hall

au bon pain.

HP CAFE

In the College of Health
Professionals Building

**NEWELL DINING HALL
& NEWELL DEN**

Chatime



FOODLAB

**GLEN DINING HALL
& GLEN MARKET**

SCIENCE CAFE

In the Science Complex

7720 CAFE

In the Administration Building

25+ CONVENIENT DINING LOCATIONS | 3 DINING HALLS | 3 FOOD COURTS | 5 CAFÉS | 3 MARKETS | MOBILE PICK UP & DELIVERY

Stay Connected This Year 🍷

Explore these digital resources to stay up to date on all dining updates, info and events!



@TUTIGERHOSPITALITY

Follow the official food feed for TU on Instagram & Facebook to stay up to date on all things dining! We highlight our delicious food, the people behind the plates, our 65+ dining events a year, giveaways, important info and more. DM us with any dining questions or comments.

WWW.TOWSON.CAMPUSDISH.COM

Visit our dining website for the full list of hours & locations, calendars, FAQs, meal plan information, catering options, daily menus, nutrition information, sustainability efforts, hiring opportunities, & more.

TU FOR FAMILIES PORTAL

TU families are invited to connect with the university through CampusESP at www.towson.campusesp.com. Check for up-to-date articles and information throughout the year to access important campus news and deadlines.

FAQs 🌱

HOW CAN I ADD A MEAL PLAN OR DINING DOLLARS?

It's easy! You can purchase a block meal plan or add Dining Dollars anytime throughout the semester by visiting the ONEcard portal at www.onecard.towson.edu. You can also upgrade your meal plan at any time. If you need to make changes to a smaller plan, it must be made by the end of the drop/add period.

WHAT MEAL PLAN HAS THE BEST VALUE?

If you're looking for the best overall value, the Platinum Plan offers a 39% cost savings compared to paying out of pocket—perfect for students who plan to eat on campus often. For off-campus students, the 100 Block Plan offers flexibility with the choice to use their meals as meal swipes or Tiger Meals, and the best value for students looking to eat at least one meal a day on campus.

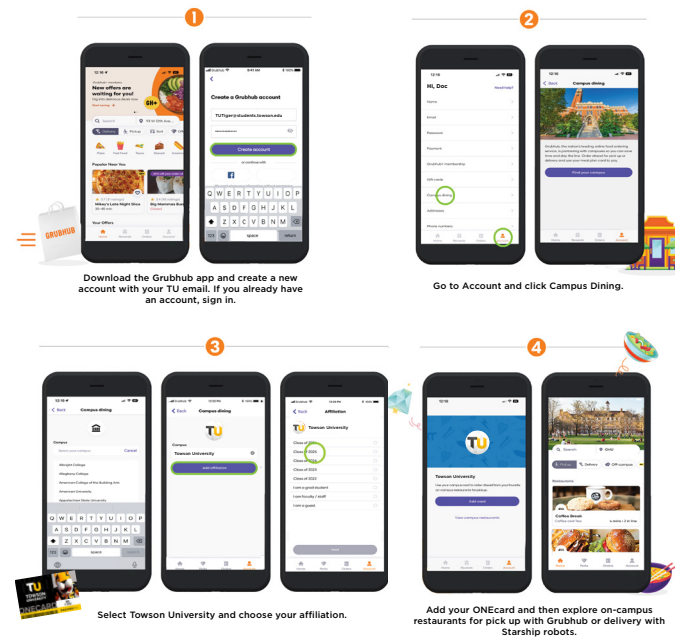
WHAT'S THE DIFFERENCE BETWEEN DINING DOLLARS AND DOC DOLLARS?

Dining Dollars are a part of your meal plan and is an accepted form of payment at all on-campus dining locations. All dining purchases made with Dining Dollars are tax exempt with a 6% savings. Doc Dollars are a university fund that can be used at all on campus dining locations and as well as for services like laundry, printing, and more.



Welcome to Grubhub Campus Dining!

Follow the steps below to activate Campus Dining in the Grubhub app and affiliate with Towson.



On-campus robot delivery is here



- 1 Open the Grubhub app
- 2 Order from restaurants offering robot delivery
- 3 Get bot delivery directly to you on campus

STARSHIP

Scan the QR code to download the Grubhub app & set up your account before coming to campus! >>>



Use code **FIRSTBITE50** for 50% off your first on-campus Grubhub order!

Dining Contacts

✉ DINING@TOWSON.EDU 📱 @TUTIGERHOSPITALITY

REGISTERED DIETITIAN,
HOLLY DELAGRANGE, MS,
RDN, LDN
You can connect with Holly by email at hdelagrang@towson.edu or by phone at 973-479-9426 for any dietary restriction or allergen support.

INTERESTED IN WORKING
FOR DINING SERVICES?
Reach out to HR Manager, Ebony Harris at Harris-Ebony@aramark.com to learn more about on campus jobs in any of our locations or Tiger Hospitality Catering.

BILLING QUESTIONS?
If you have questions related to dining billing, or your student account, contact the TU Auxiliary Services at 410-704-2284 or onecard@towson.edu.